


**BALLASTS ENCASTRABLES
POUR LAMPES A VAPEUR
DE MERCURE**

50 - 400W

Jusqu'a 125W: Raccordement type 1 \square 1 - 2,5 mm² **220V / 60 Hz**
De 250 a 400W: Raccordement type 3 \square 1,5 - 4 mm²

VDE 0712 EN61347-60923 tw 130

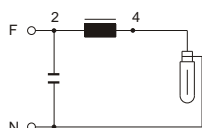
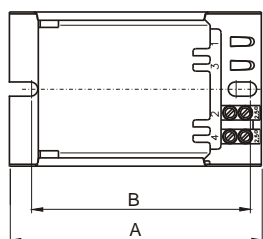
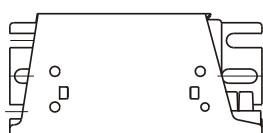
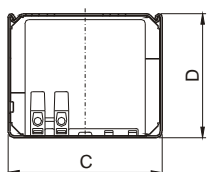
MODELE	TYPE	BALLAST						COMPENSATION		CARACTERIS. PHISQUES					
		LAMPE		V / Hz	Inductive I	Temp. Dt	Schemas	Paralele mF ±10% 250V		DIMENSIONS				Poids (grs.)	Pieces Embaees
		Puissance (W)	Intensite (A)							A (mm)	B (mm)	C (mm)	D (mm)		
HIA 5/22/6	Q 50 11030	50	0,61	220/60	0,44	50	15	6	*	106,3	92,3	65	52,3	1075	8
HIA 8/22/6	Q 80 12030	80	0,80	220/60	0,51	60	15	7	*	106,3	92,3	65	52,3	1075	8
HIA 12/22/6	Q 125 13030	125	1,15	220/60	0,57	65	15	9	*	106,3	92,3	65	52,3	1375	8
HIA-HSI 25/22/6	QM 250 21030	250	2,15	220/60	0,58	65	15	16	*	117	103	86,6	73	2500	4
HIA-HSI 40/22/6	QM 400 22030	400	3,25	220/60	0,60	65	15	25	*	137	123	86,6	73	3375	4
HIA-HSI 40/22/6-2		400	3,25	220/60	0,60	75	15	25	-	117	103	86,6	73	2500	4

SECTION REDUIT (SR)

Raccordement type 1 \square 1 - 2,5 mm²

HIA-HSI 25/22/6-SR	QM 250 14030	250	2,15	220/60	0,55	65	15	16	-	135,3	121,3	65	52,3	2050	8
--------------------	--------------	-----	------	--------	------	----	----	----	---	-------	-------	----	------	------	---

D'autres tensions et frequences sur demande



15

