


**BALLASTS ENCAPSULE
POUR LAMPES A VAPEUR
DE SODIUM HAUTE PRESSION**
50 - 1000W
Avec Igniteur Superposition
230V / 50 Hz

 Jusqu'a 100W: Raccordement type 1 \square 1 - 2,5 mm²

 De 150 a 1000W: Raccordement type 3 \square 1,5 - 4 mm²
VDE 0712 EN61347-60923 tw 130

MODELE	TYPE	BALLAST						COMPENSATION		CARACTERIS. PHYSIQUES				Poids (grs.)	Pieces Embleees
		LAMPE		V / Hz	Inductive I	Temp. Dt	Schemas	Paralele mF ±10% 250V		DIMENSIONS					
		Puissance (W)	Intensite (A)							A (mm)	B (mm)	C (mm)	D (mm)		
HSE-SAPE 5/23	SME 50 12201	50	0,76	230/50	0,37	60	15-20	9	*	89	75	71	63	1125	8
HSE-SAPE 7/23	SME 70 13201	70	1	230/50	0,38	65	15-20	12	*	103	89	71	63	1480	8
HSE-SAPE 10/23	SME 100 14200	100	1,20	230/50	0,42	70	20	13	*	103	89	71	63	1480	8
HSE-SAPE 15/23	SME 150 21201	150	1,80	230/50	0,40	65	20	20	*	114	97,2	93	84	2700	4
HSE-SAPE 25/23	SME 250 22206	250	3	230/50	0,40	70	20	32	*	124	107,2	93	84	3200	4
HSE-SAPE 40/23	SME 400 23201	400	4,45	230/50	0,42	70	20	50	*	164	147,2	93	84	4850	4
SAPE-HSE 60/23		600	6,10	230/50	0,46	70	20	65	-	195,4	-	116,8	105,3	8000	2
HSE-SAPE 100/23		1000	10,3	230/50	0,45	75	20	100	-	255,4	-	116,8	105,3	11500	2

SECTION REDUIT (SR)

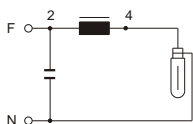
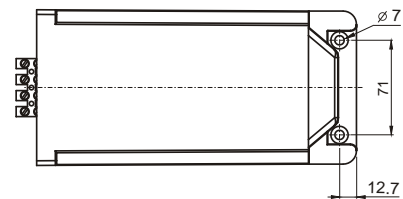
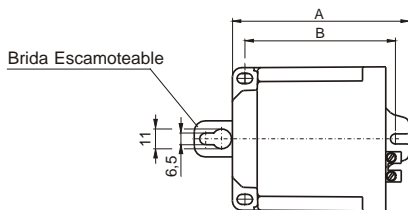
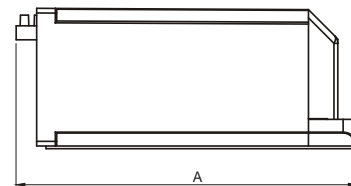
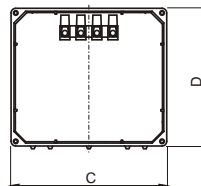
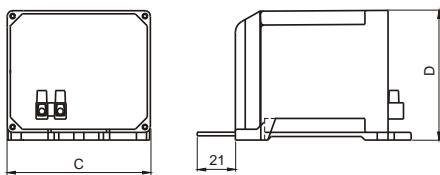
 Raccordement type 1 \square 1 - 2,5 mm²

HSE-SAPE 15/23/SR	SME 150 15201	150	1,80	230/50	0,41	75	20	20	*	132	118	71	63	2200	6
-------------------	---------------	-----	------	--------	------	----	----	----	---	-----	-----	----	----	------	---

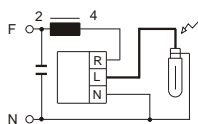
Modeles a 220V et 240V homologue



D'autres tensions et frequences sur demande

Available avec protection thermique. Augmenter "- P" au modele
- 600/1000W -


15



20



Verifier la distance du arranceur a la lampe (Pag. 63)