


**BALLASTS FOR
MERCURY VAPOUR LAMPS
(BUILT-IN USE)**
50 - 400W
220V / 50 Hz

 Up to 125W: Terminal type 1 $\varnothing 1 - 2,5 \text{ mm}^2$

 From 250 to 400W: Terminal type 3 $\varnothing 1,5 - 4 \text{ mm}^2$
VDE 0712 EN61347-60923 tw 130

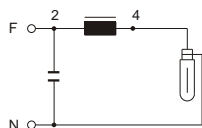
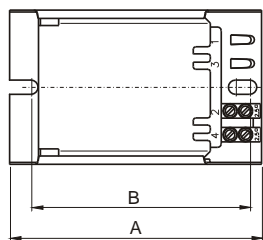
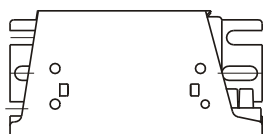
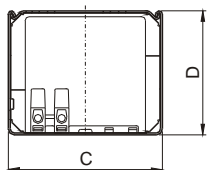
MODEL	TYPE	BALLAST							COMPENSATION $I = 0,95 \pm 0,05$		PHYSICAL CHARACTERISTICS					
		LAMP		V / Hz	Inductive I	Temp. Dt	Diagrams	Parallel mF $\pm 10\%$ 250V			DIMENSIONS				Weight (grs.)	Packing Units
		Wattage (W)	Current (A)								A (mm)	B (mm)	C (mm)	D (mm)		
HIA 5/22	Q 50 11200	50	0,61	220/50	0,44	55	15	7	*	106,3	92,3	65	52,3	1075	8	
HIA 8/22	Q 80 12200	80	0,80	220/50	0,51	60	15	8	*	106,3	92,3	65	52,3	1075	8	
HIA 12/22	Q 125 13200	125	1,15	220/50	0,55	65	15	10	*	106,3	92,3	65	52,3	1375	8	
HIA-HSI 25/22	QM 250 21200	250	2,15	220/50	0,57	65	15	18	*	117	103	86,6	73	2500	4	
HIA-HSI 40/22	QM 400 22200	400	3,25	220/50	0,60	65	15	28	*	137	123	86,6	73	3375	4	

SLIM SECTION (SR)

 Terminal type 1 $\varnothing 1 - 2,5 \text{ mm}^2$

HIA-HSI 25/22/SR	QM 250 14200	250	2,15	220/50	0,55	85	15	18		135,3	121,3	65	52,3	2050	8
------------------	--------------	-----	------	--------	------	----	----	----	--	-------	-------	----	------	------	---

Other voltages and frequencies are available on request



15

