


**BALLASTS FOR  
HIGH PRESSURE SODIUM VAPOUR LAMPS  
(BUILT-IN USE)**
**50 - 1000W**
**Operation with Superimposed Ignitor**
**240V / 50 Hz**

 Up to 100W: Terminal type 1  $\square 1 - 2,5\text{mm}^2$ 

 From 150 to 1000W: Terminal type 3  $\square 1,5 - 4\text{mm}^2$ 
**VDE 0712 EN61347-60923 tw 130**

MODEL	TYPE	BALLAST						COMPENSATION $I = 0,95 \pm 0,05$		PHYSICAL CHARACTERISTICS				Packing Units	
		LAMP		V / Hz	Inductive I	Temp. Dt	Diagrams			DIMENSIONS					Weight (grs.)
		Wattage (W)	Current (A)							A (mm)	B (mm)	C (mm)	D (mm)		
HSI-SAPI 5/24	SM 50 12201	50	0,76	240/50	0,37	65	15-20	9	*	106,3	92,3	65	52,3	1075	8
HSI-SAPI 7/24	SM 70 13201	70	1	240/50	0,38	65	15-20	12	*	106,3	92,3	65	52,3	1375	8
HSI-SAPI 10/24	SM 100 14200	100	1,20	240/50	0,42	75	20	13	*	106,3	92,3	65	52,3	1375	8
HSI-SAPI 15/24	SM 150 21201	150	1,80	240/50	0,40	70	20	20	*	117	103	86,6	73	2500	4
HSI-SAPI 25/24	SM 250 22206	250	3	240/50	0,40	75	20	32	*	127	113	86,6	73	3000	4
HSI-SAPI 25/24/2	SM 250 22021	250	3	240/50	0,40	70	20	32	-	137	123	86,6	73	3375	4
HSI-SAPI 40/24	SM 400 23201	400	4,45	240/50	0,42	75	20	50	*	167	153	86,6	73	4700	4
SAPI-HSI 60/24	S 600 34221	600	6,10	240/50	0,46	75	20	65	*	148	137,5	102	92	7050	2
HSI-SAPI 100/24	SM 1000 35221	1000	10,3	240/50	0,45	80	20	100	-	203	192,5	102	92	10800	2

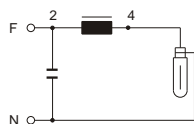
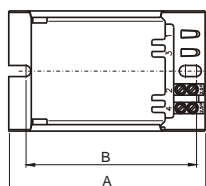
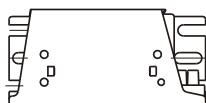
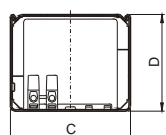
**SLIM SECTION ( SR )**

 Terminal type 1  $\square 1 - 2,5\text{mm}^2$ 

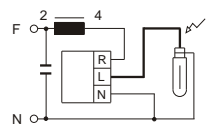
HSI-SAPI 15/24/SR	SM 150 15201	150	1,80	240/50	0,41	75	20	20	*	135,3	121,3	65	52,3	2050	8
-------------------	--------------	-----	------	--------	------	----	----	----	---	-------	-------	----	------	------	---

Other voltages and frequencies are available on request

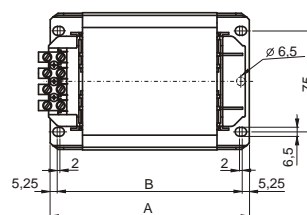
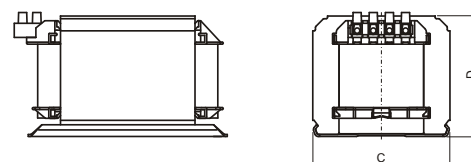
Available with thermal cut-out. Add "- P" to model



15



20

**600-1000W**


Check maximum distance from the ignitor to the lamp (Page 63)