


**BALLASTS FOR  
HIGH PRESSURE SODIUM VAPOUR LAMPS  
(BUILT-IN USE)**
**50 - 1000W**
**Operation with Superimposed Ignitor**
**220V / 60 Hz**

 Up to 100W: Terminal type 1  $\varnothing 1 - 2,5\text{mm}^2$ 

 From 150 to 1000W: Terminal type 3  $\varnothing 1,5 - 4\text{mm}^2$ 
**VDE 0712 EN61347-60923 tw 130**

MODEL	TYPE	BALLAST						COMPENSATION $I = 0,95 \pm 0,05$		PHYSICAL CHARACTERISTICS				Packing Units	
		LAMP		V / Hz	Inductive I	Temp. Dt	Diagrams			Parallel mF $\pm 10\%$ 250V	DIMENSIONS				Weight (grs.)
		Wattage (W)	Current (A)					A (mm)	B (mm)		C (mm)	D (mm)			
HSI-SAPI 5/22/6	SM 50 12031	50	0,76	220/60	0,36	55	15-20	8	*	106,3	92,3	65	52,3	1075	8
HSI-SAPI 7/22/6	SM 70 13031	70	1	220/60	0,40	60	15-20	10	*	106,3	92,3	65	52,3	1375	8
HSI-SAPI 10/22/6	SM 100 14030	100	1,20	220/60	0,44	65	20	11	*	106,3	92,3	65	52,3	1375	8
HSI-SAPI 15/22/6	SM 150 21031	150	1,80	220/60	0,42	55	20	18	*	117	103	86,6	73	2500	4
HSI-SAPI 25/22/6	SM 250 22036	250	3	220/60	0,40	65	20	28	*	127	113	86,6	73	3000	4
HSI-SAPI 25/22/6-2	SM 250 22031	250	3	220/60	0,40	65	20	28	*	137	123	86,6	73	3375	4
HSI-SAPI 40/22/6	SM 400 23031	400	4,45	220/60	0,45	65	20	40	*	167	153	86,6	73	4700	4
SAPI-HSI 60/22/6		600	6,10	220/60	0,46	75	20	55	-	148	137,5	102	92	7050	2
HSI-SAPI 100/22/6		1000	10,3	220/60	0,45	75	20	85	-	203	192,5	102	92	10800	2

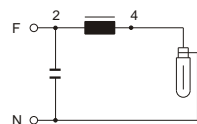
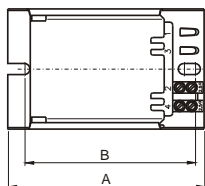
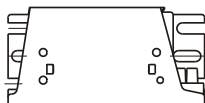
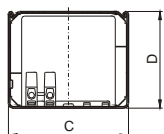
**SLIM SECTION ( SR )**

 Terminal type 1  $\varnothing 1 - 2,5\text{mm}^2$ 

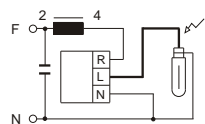
HSI-SAPI 15/22/6-SR	SM 150 15031	150	1,80	220/60	0,42	65	20	18	*	135,3	121,3	65	52,3	2050	8
---------------------	--------------	-----	------	--------	------	----	----	----	---	-------	-------	----	------	------	---

Other voltages and frequencies are available on request

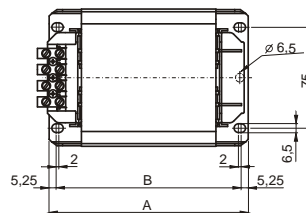
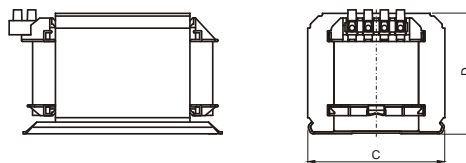
Available with thermal cut-out. Add "- P" to model



15



20

**600-1000W**


Check maximum distance from the ignitor to the lamp (Page 63)