


**ENCAPSULATED BALLASTS FOR  
METAL HALIDE LAMPS**
**35 - 1000W**
**Operation with Superimposed Ignitor**
**230V / 50 Hz**

 Up to 100W: Terminal type 1  $\square 1 - 2,5\text{mm}^2$ 

 From 150 to 1000W: Terminal type 3  $\square 1,5 - 4\text{mm}^2$ 
**VDE 0712 EN 61347-60923 tw 130**

MODEL	TYPE	BALLAST						COMPENSATION $I = 0,95 \pm 0,05$		PHYSICAL CHARACTERISTICS				Packing Units	
		LAMP		V / Hz	Inductive I	Temp. Dt	Diagrams			DIMENSIONS					Weight (grs.)
		Wattage (W)	Current (A)					A (mm)		B (mm)	C (mm)	D (mm)			
HSE-SAPE 3/23	MSE 35 11200	35	0,53	230/50	0,40	45	20	6	*	89	75	71	63	1125	8
HSE-SAPE 5/23	SME 50 12201	50	0,76	230/50	0,37	60	20	9	*	89	75	71	63	1125	8
HSE-SAPE 7/23	SME 70 13201	70	1	230/50	0,38	65	20	12	*	103	89	71	63	1480	8
HSE-SAPE 10/23	SME 100 14200	100	1,20	230/50	0,42	70	20	13	*	103	89	71	63	1480	8
HSE-SAPE 15/23	SME 150 21201	150	1,80	230/50	0,40	65	20	20	*	114	97,2	93	84	2700	4
HEC-HSE 25/23	QME 250 21200	250	2,15	230/50	0,55	65	20-25	18	*	114	97,2	93	84	2700	4
HSE-SAPE 25/23	SME 250 22206	250	3	230/50	0,40	70	20	32	*	124	107,2	93	84	3200	4
HEC-HSE 40/23	QME 400 22200	400	3,50	230/50	0,50	65	20-25	35	*	134	117,2	93	84	3600	4
HSE-SAPE 40/23	SME 400 23011	400	4,2	230/50	0,48	70	20	50	*	164	147,2	93	84	4850	4
HSE-SAPE 100/23		1000	9,5	230/50	0,50	75	20	85	-	255,4	-	116,8	105,3	11500	2

**SLIM SECTION ( SR )**

 Terminal type 1  $\square 1 - 2,5\text{mm}^2$ 

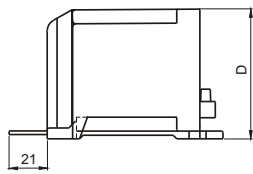
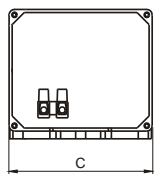
HSE-SAPE 15/23/SR	SME 150 15201	150	1,80	230/50	0,41	75	20	20	*	132	118	71	63	2200	6
-------------------	---------------	-----	------	--------	------	----	----	----	---	-----	-----	----	----	------	---

Models at 220V and 240V are certified

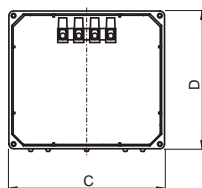
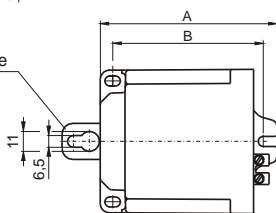
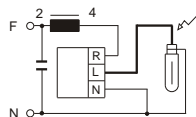
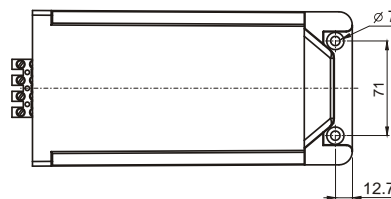
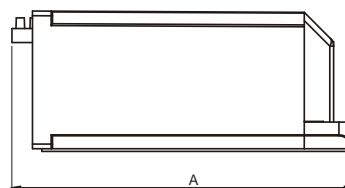


Other voltages and frequencies are available on request

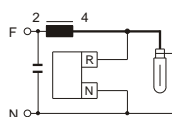
Available with thermal cut-out. Add "- P" to model



Retractable bride


**-1000W-**


20



25



Check maximum distance from the ignitor to the lamp (Page 63)